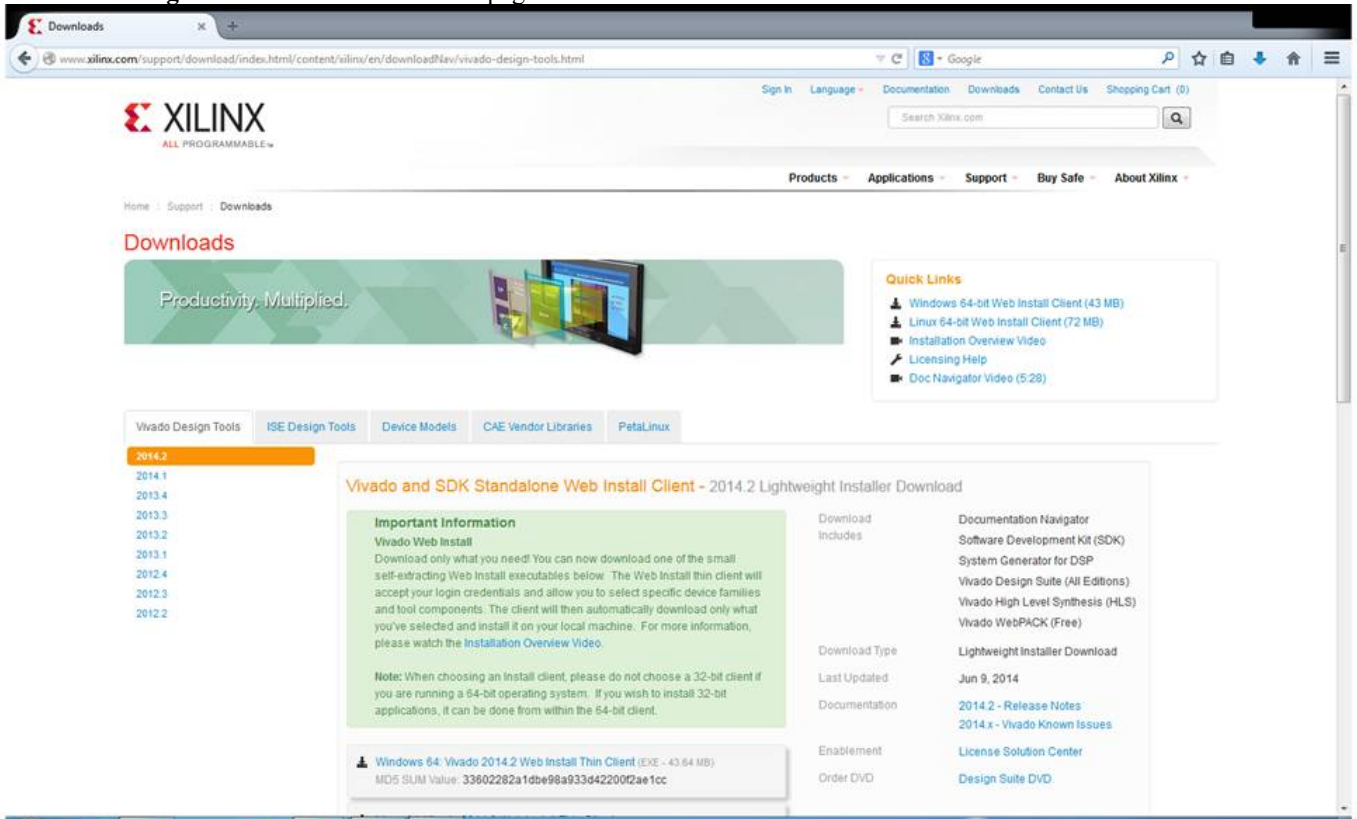


Xilinx ISE WebPACK Installation Instructions

Note: - The instructions and images are specifically for Xilinx ISE WebPACK 14.7 on Windows. Windows 10 is not officially supported. Workarounds are reported: <http://www.xilinx.com/support/answers/62380.html>

Select **ISE Design Tools** tab on the download page.



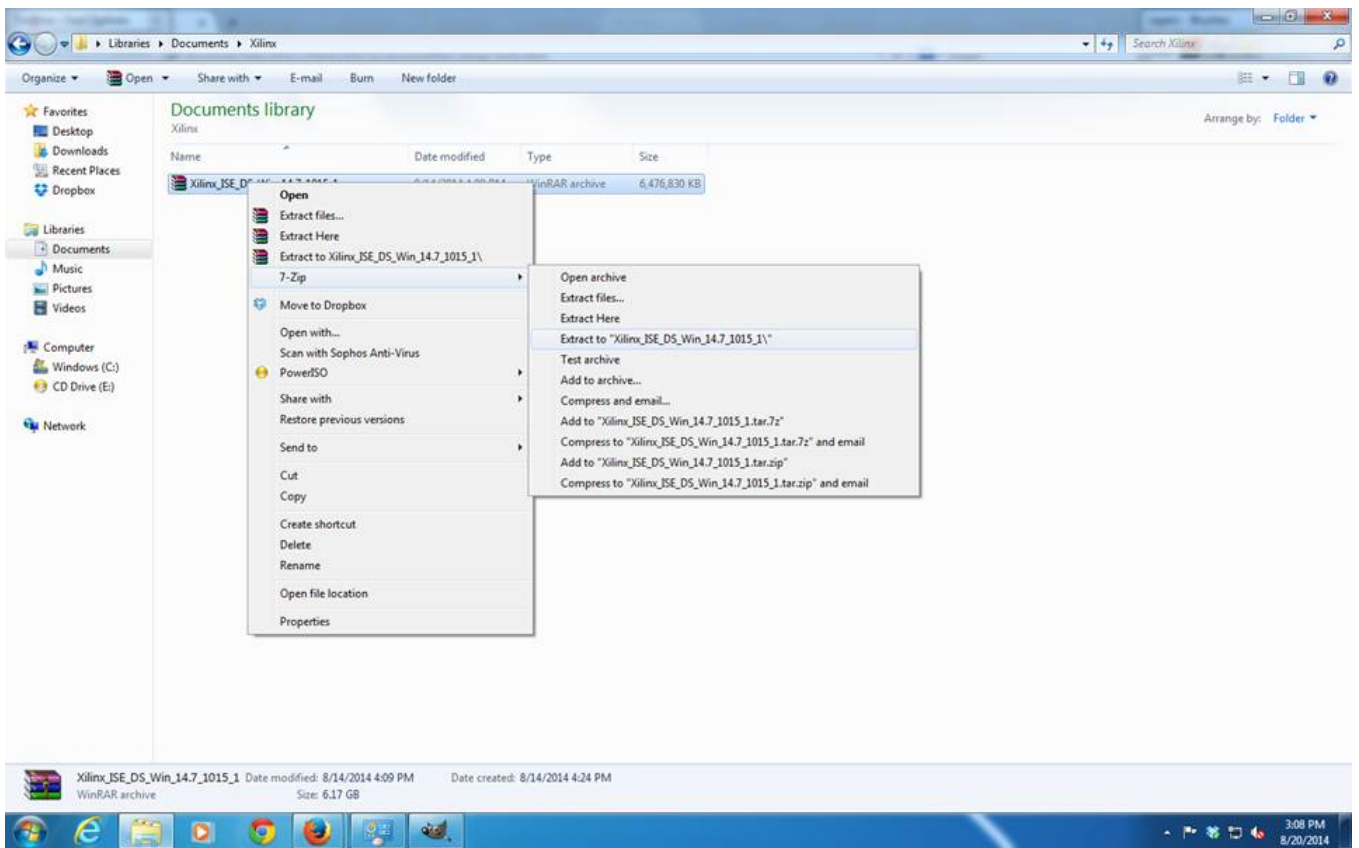
Select version 14.7 and download ISE Design Suite specific to your OS version.

Note: -

1. The top two options on the **ISE Design Tools** tab are: **Multi-File Download: ISE Design** and **ISE Design Suite**.
2. Under ISE Design Suite select the appropriate installer for your operating system:
 - a. Linux: Full Installer for Linux; and
 - b. Windows: Full Installer for Windows.
3. The installer files are very large (about **6 GB**) hence downloading them will take time (sometimes **more than an hour**).

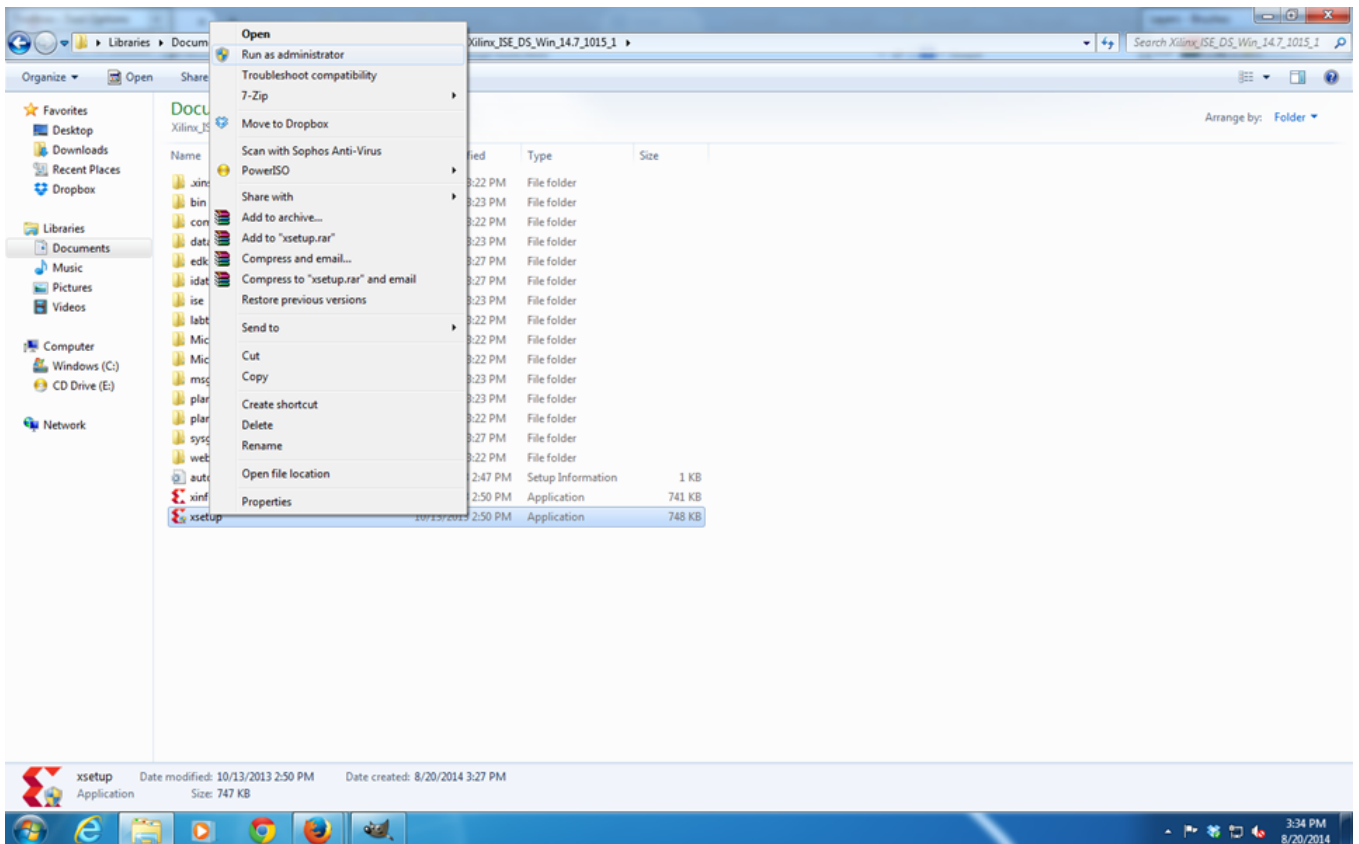
Sign in to download the file, create a User ID if needed. Depending on your internet speed you can either download Xilinx ISE as a single .tar file or multiple .tar files. Here we assume that we have downloaded the single .tar file for Windows.

Extract the .tar archive using 7-Zip or WinRAR, here we use 7-Zip. Select the Xilinx ISE .tar archive, right-click and under 7-Zip select "Extract to "Xilinx_ISE..." folder.



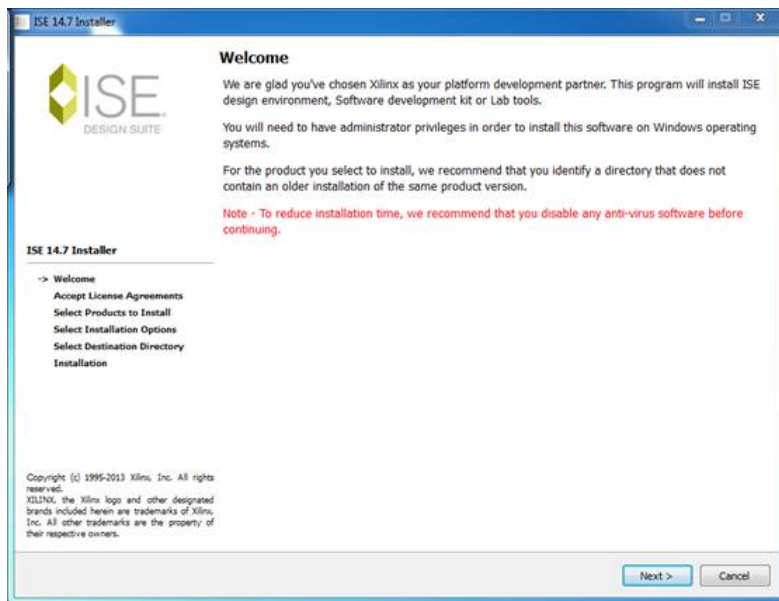
Right click on the “xsetup.exe” file in the folder to which the archive was extracted and select “Run as administrator”.

Note: -Installation requires between **17 – 20 GB** of disk space and takes time (again, sometimes **more than an hour**).

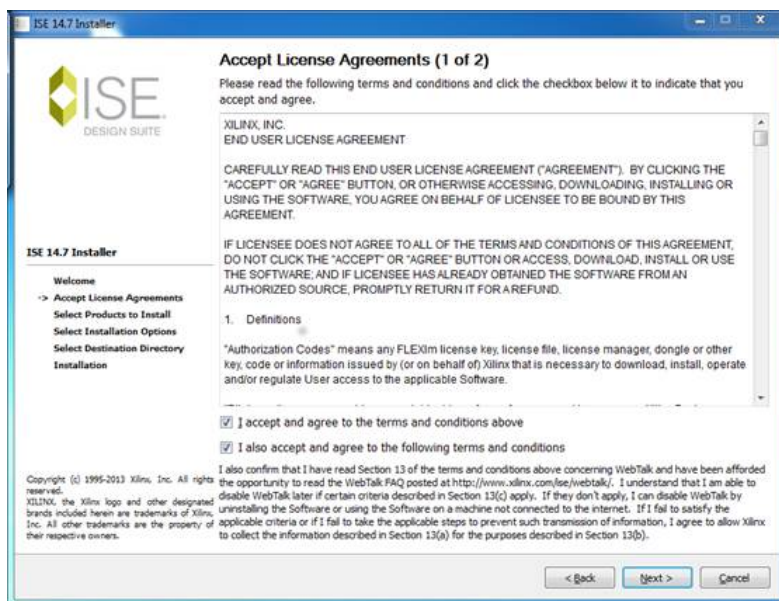


Provide administrator password, if needed.

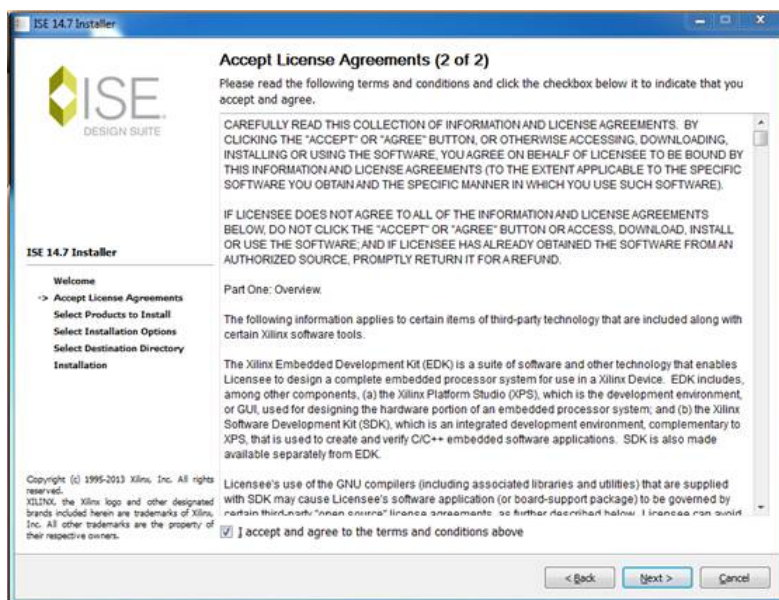
Click on “Next” to start installation.



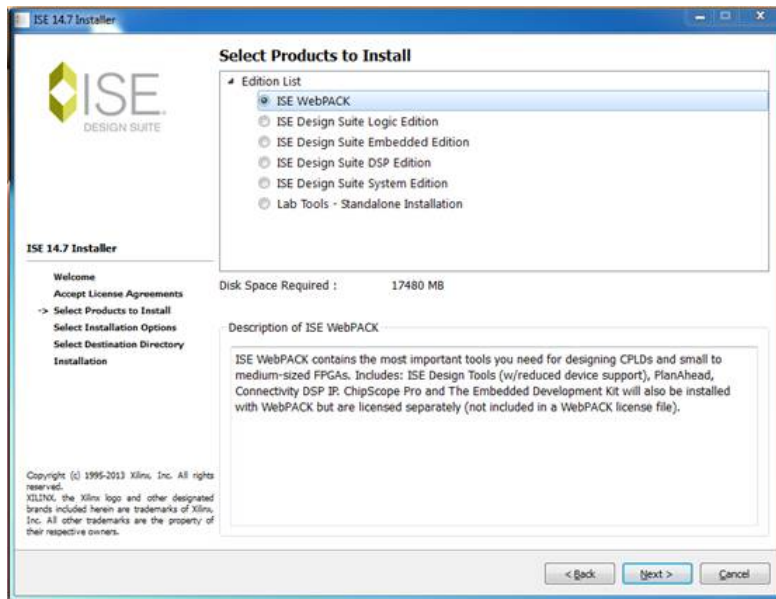
Accept the license agreement and click “Next” to continue.



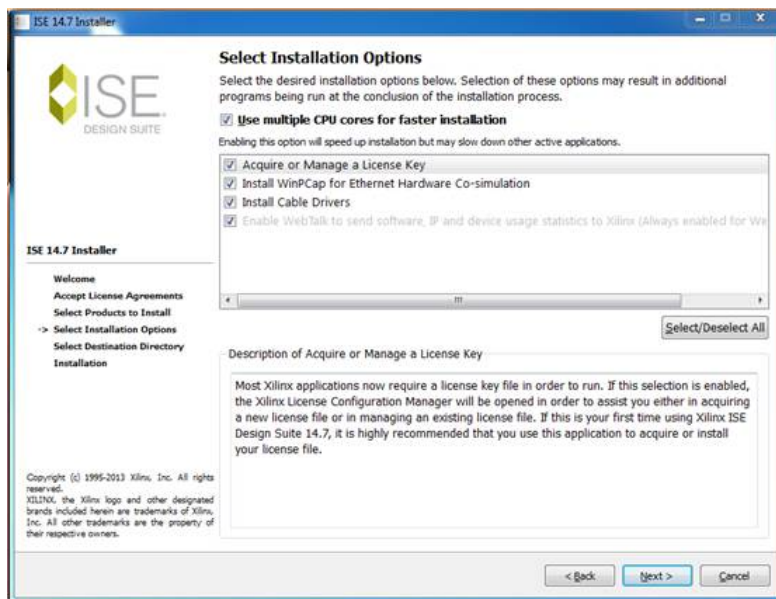
Accept the second part of license agreement and click “Next” to continue.



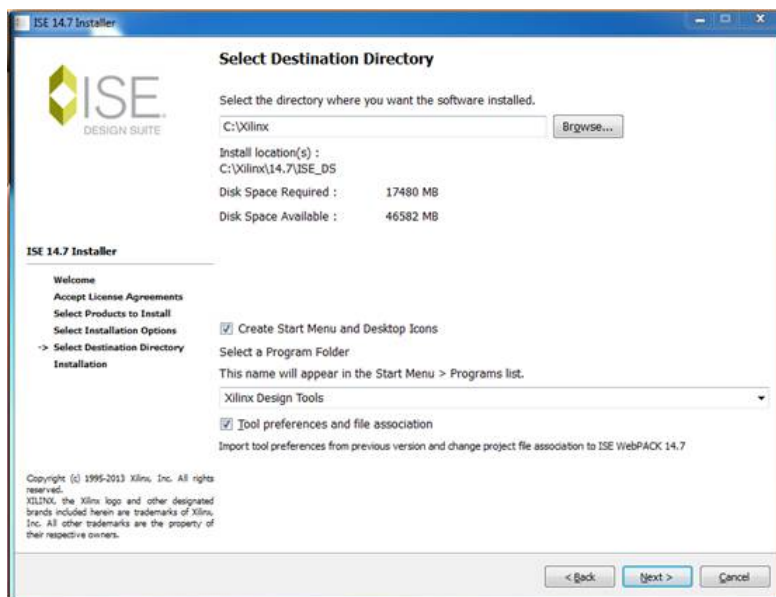
Select the products to install and click “Next”. If you want to use the free edition select “ISE WebPACK” under editions, the other editions require a paid license or install the software as a 30-day trial edition.



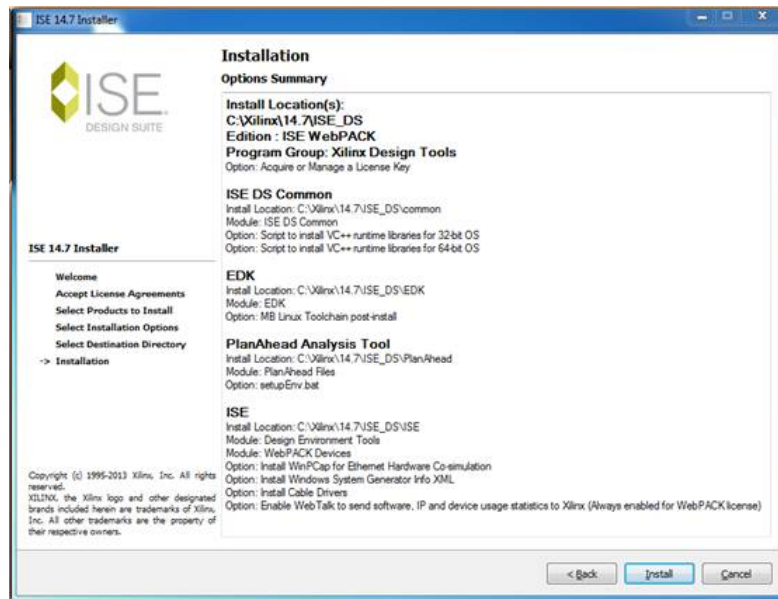
Select installation options and click “Next”. You can go with the default selections.



Select the location of the installation folder, you can either use the default “Destination Folder” or select another one and click “Next”. You can keep the other options that are selected by default.

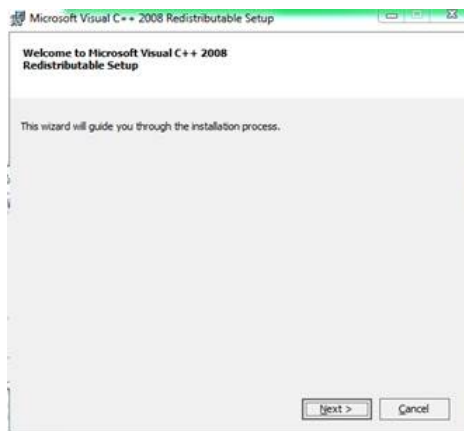


Click “Install” to continue with the installation process.

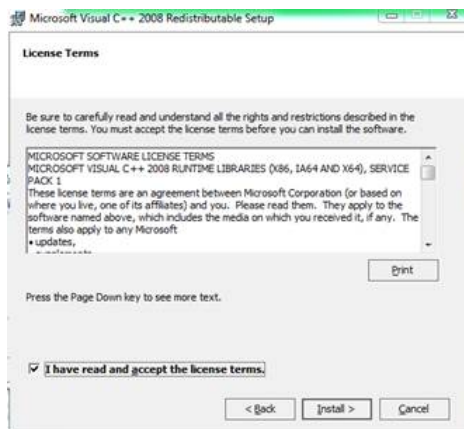


During installation, if, Microsoft Visual C++ Redistributable Setup window pops up click “Next” to continue.

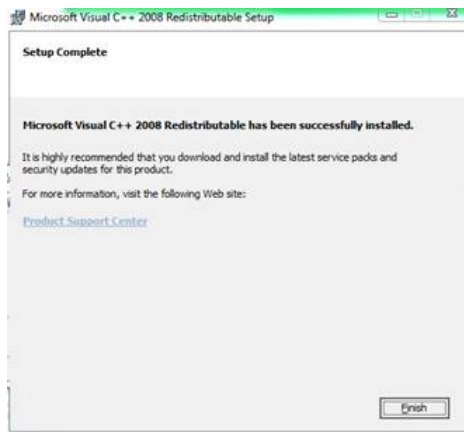
Note: - Many different tools use Microsoft Visual C++ Redistributables. Hence if these redistributables exist on your PC then Xilinx ISE will ask you to install these.



Accept the license terms and click “Next” to continue.



Click “Finish” to complete Microsoft Visual C++ Redistributable Setup.



During installation, if, WinPcap setup installer window pops up click “Next” to continue.



Click “Next” to continue.



Click “I Agree” to accept the license agreement and continue with the installation.



Click “Install” to install the drivers. After the drivers are installed, on the popup window click “Finish” to complete the driver installation.



Disconnect any Xilinx boards and cables, if connected, and click “OK” to continue.



Click “Install” to install device software from Jungo.

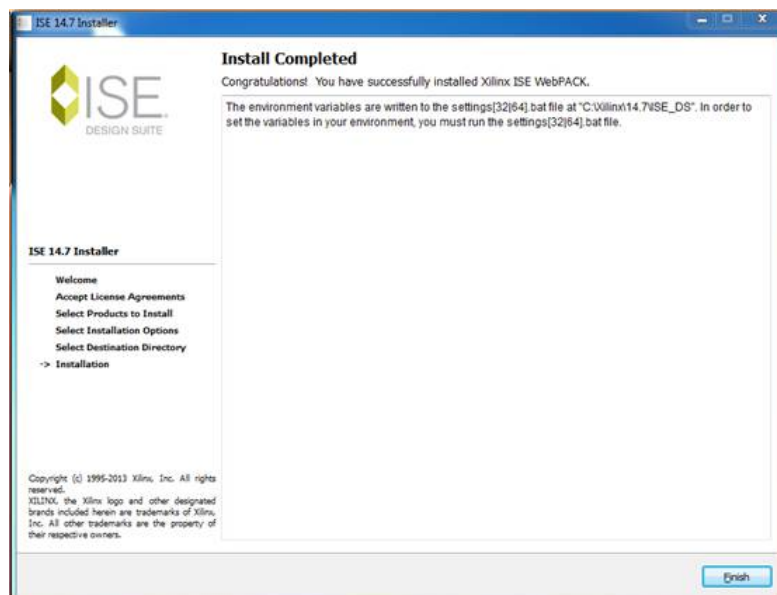


Click “Install” to install device software from Xilinx.

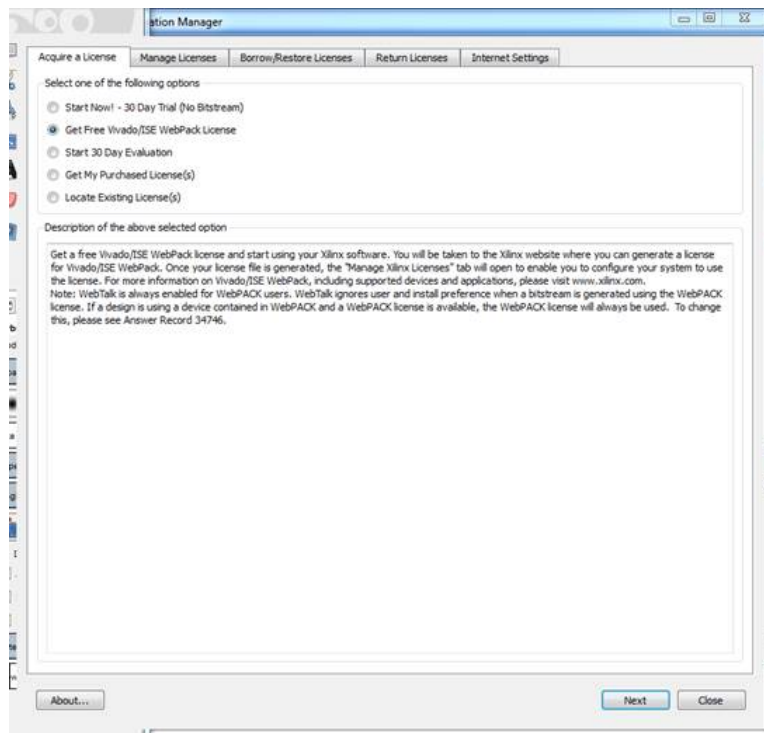


Finish installation by clicking “Finish”.

Note: -You can use Xilinx ISE with the default environment variables. But, if interested you can set environment variables, ex. Home directory, by changing settings in the .bat file located inside the installation directory. If the installation directory is C:\Xilinx and the version was 14.7 then the .bat files are located at C:\Xilinx\14.7\ISE_DS. If using 64-bit OS modify settings64.bat and if using 32-bit OS modify settings32.bat files respectively. **Xilinx ISE can be used with the default setting in the settings batch file. Make changes to the .bat file only if you know what you are doing. We will not be able to help if you have any issues.**

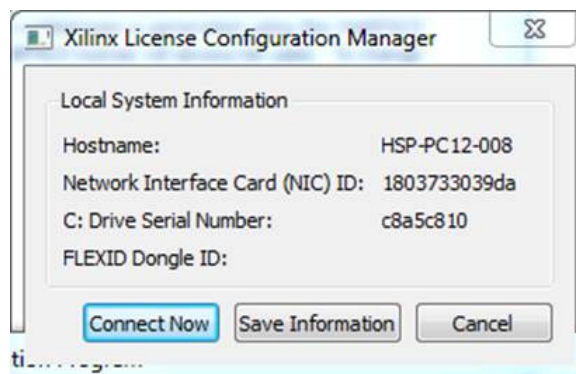


Select “Get Free Vivado/ISE WebPACK License” under the “Acquire a License” tab in the Xilinx License Configuration Manager window that pops up and click “Next” to continue.

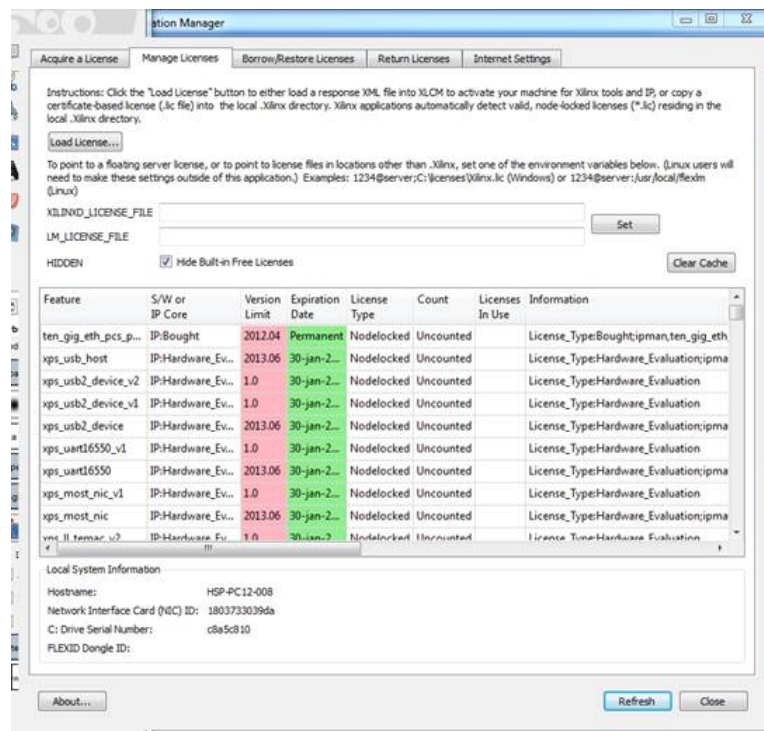
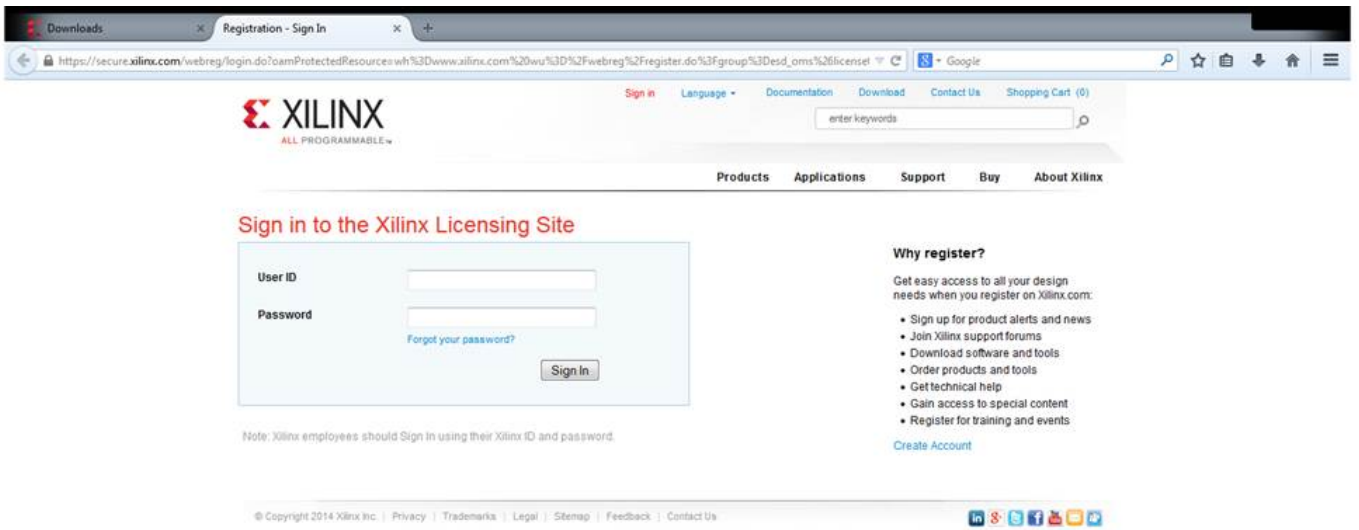


NOTE: - Xilinx might change the description of the products for which licenses are generated. If “Get Free Vivado/ISE WebPACK License” is not listed under options, search for a product whose name includes the terms “Free”, “ISE” and “WebPACK”.

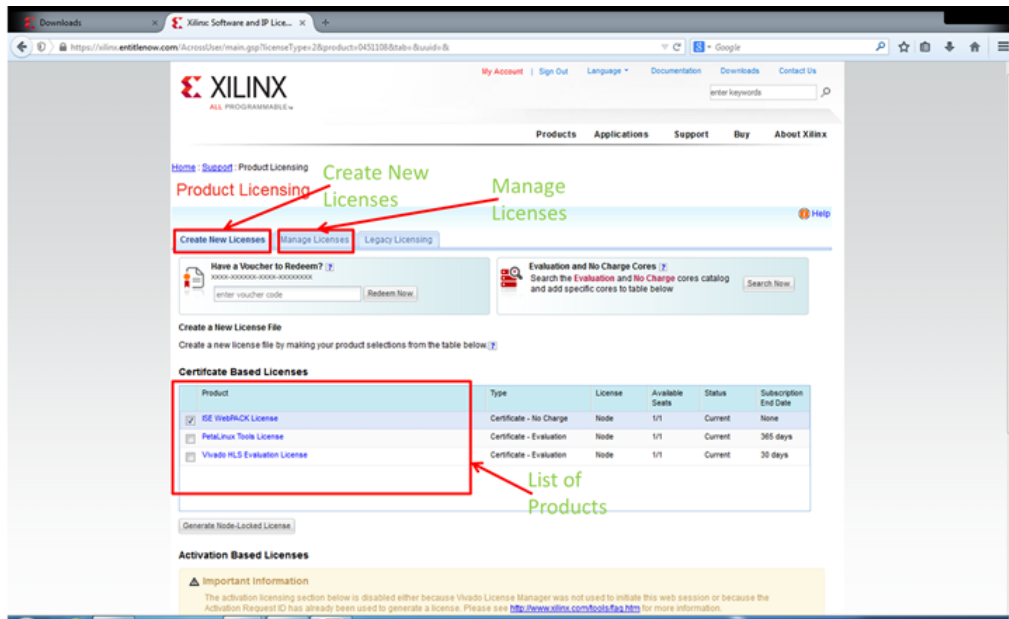
Click “Connect Now” on the popup window with the System Information.



This should open the licensing site at Xilinx, and “Manage Licenses” tab in “Xilinx License Configuration Manager”.

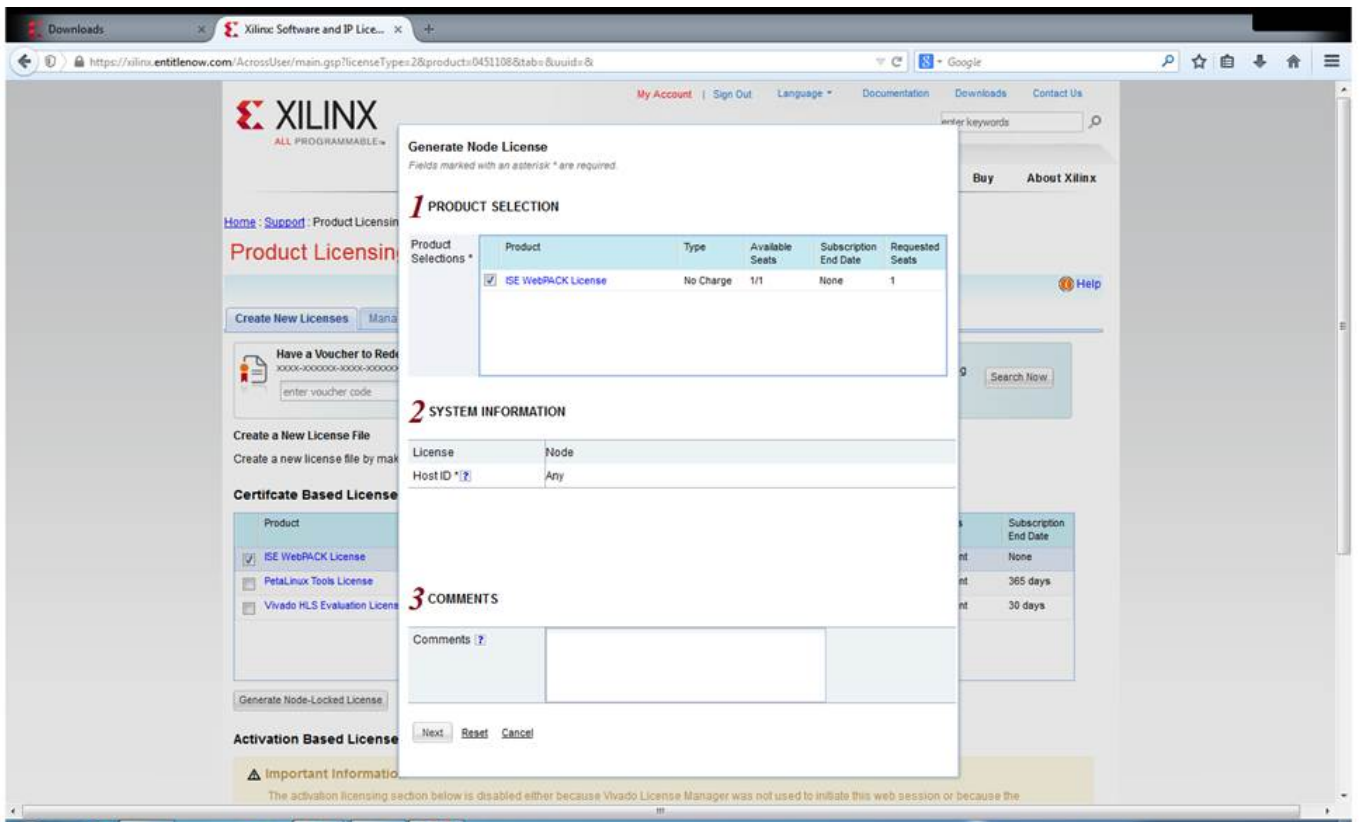


Sign in to the Xilinx Licensing site, if needed. In the Xilinx Product Licensing webpage under the "Create New Licenses" tab select "ISE WebPACK License" and click Generate Node-Locked License.

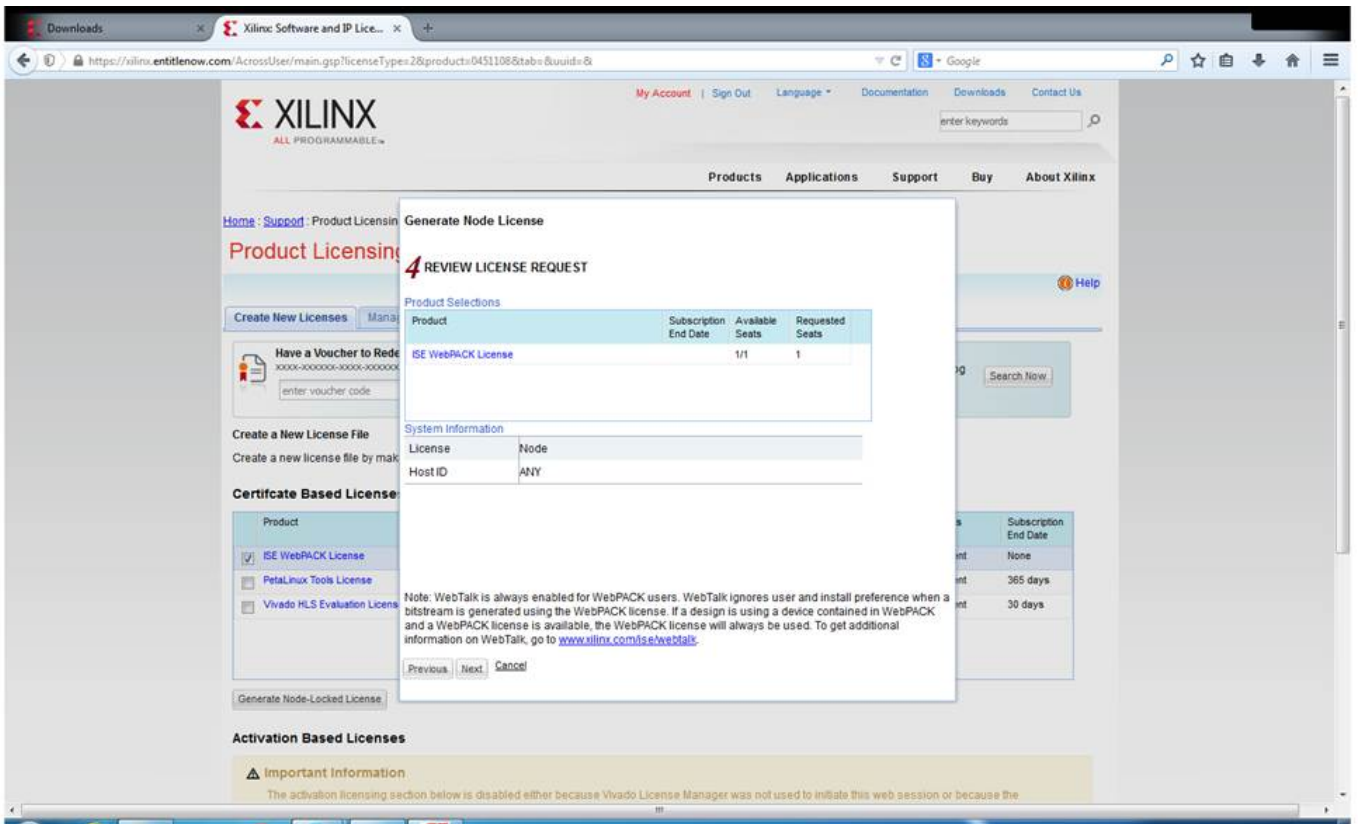


NOTE: - Xilinx might change the description of the products for which licenses are generated. If “ISE WebPACK License” is not listed under products, search for a product whose name includes the terms “ISE” and “WebPACK”.

On the popup window click “Next”

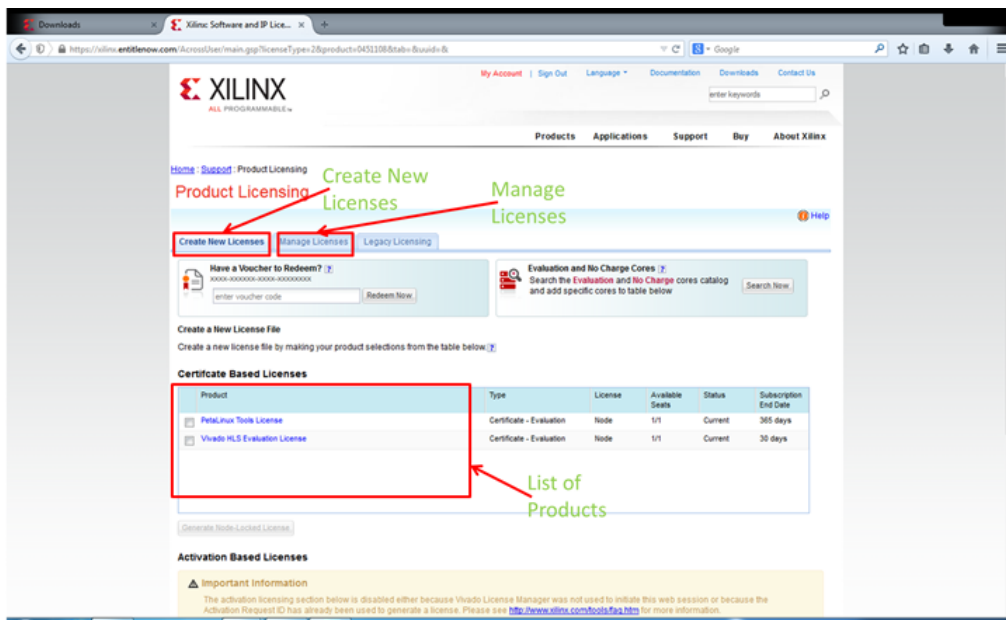


On the Review License Request window click “Next”

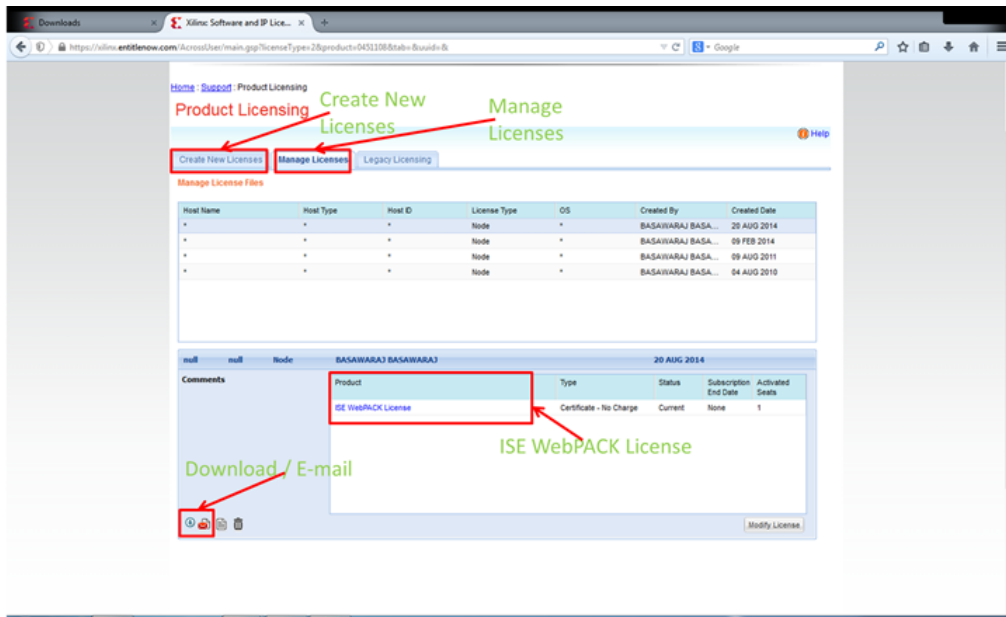


The license file is mailed to your email address used for the Xilinx account. You can now download the license file from your email inbox.

Note: -If you have previously downloaded a license for this product (ISE WebPACK License) you will observe that the product is not listed under “Create New Licenses” tab on the **Product Licensing** page, as observed in the figure below.



The license for “ISE WebPACK License” is listed under **Manage Licenses** tab, shown in the figure below.

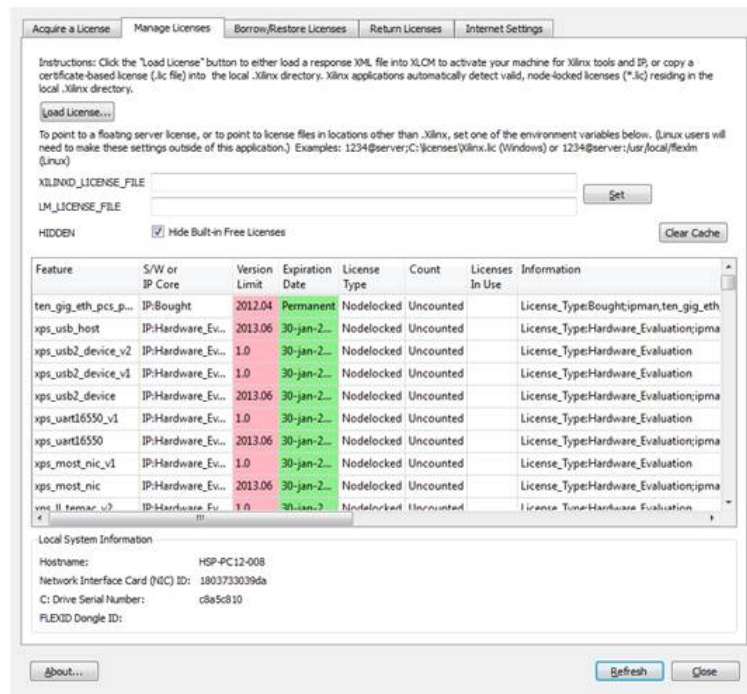


To obtain the license:

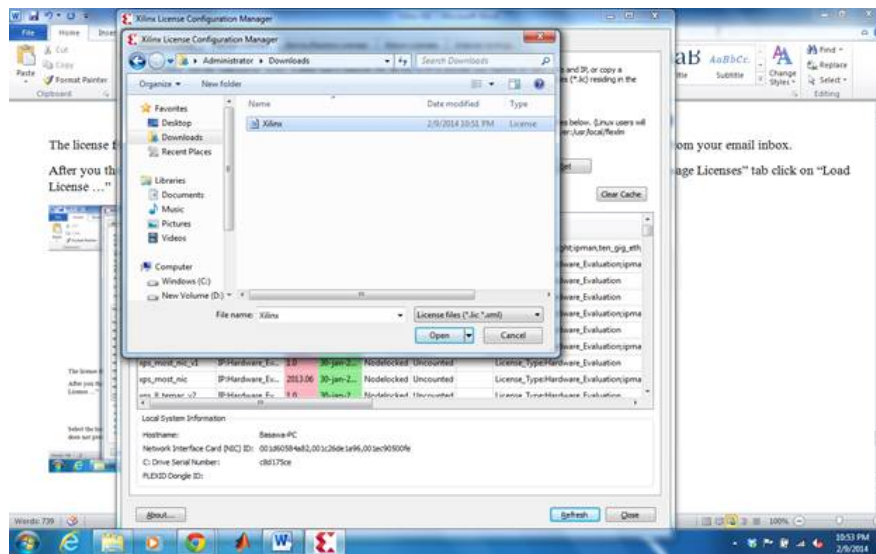
1. Select the specific product, “ISE WebPACK License”
2. Click on either the **Download** or **E-mail** icons at the bottom-left (and high lightened in the figure above). Use **Download** to directly download the license file and use **E-mail** to mail yourself a copy of the license file.

Note: -If you have the license file previously downloaded (or received as an e-mail attachment) you can still use the same.

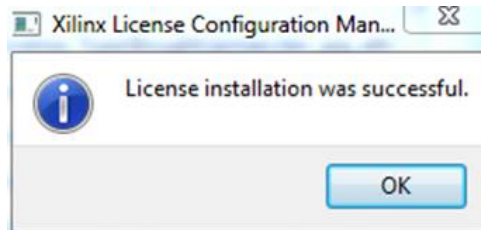
After the license (.lic) file has been downloaded, on the “Xilinx License Configuration Manager” under the “Manage Licenses” tab click on “Load License ...”



On the popup window navigate to the license file that you just downloaded select the license file and click “Open”.



If the installation was successful a window showing “License installation was successful” pops up. Click “OK”.



Click “Close” to close “Xilinx License Configuration Manager”.

