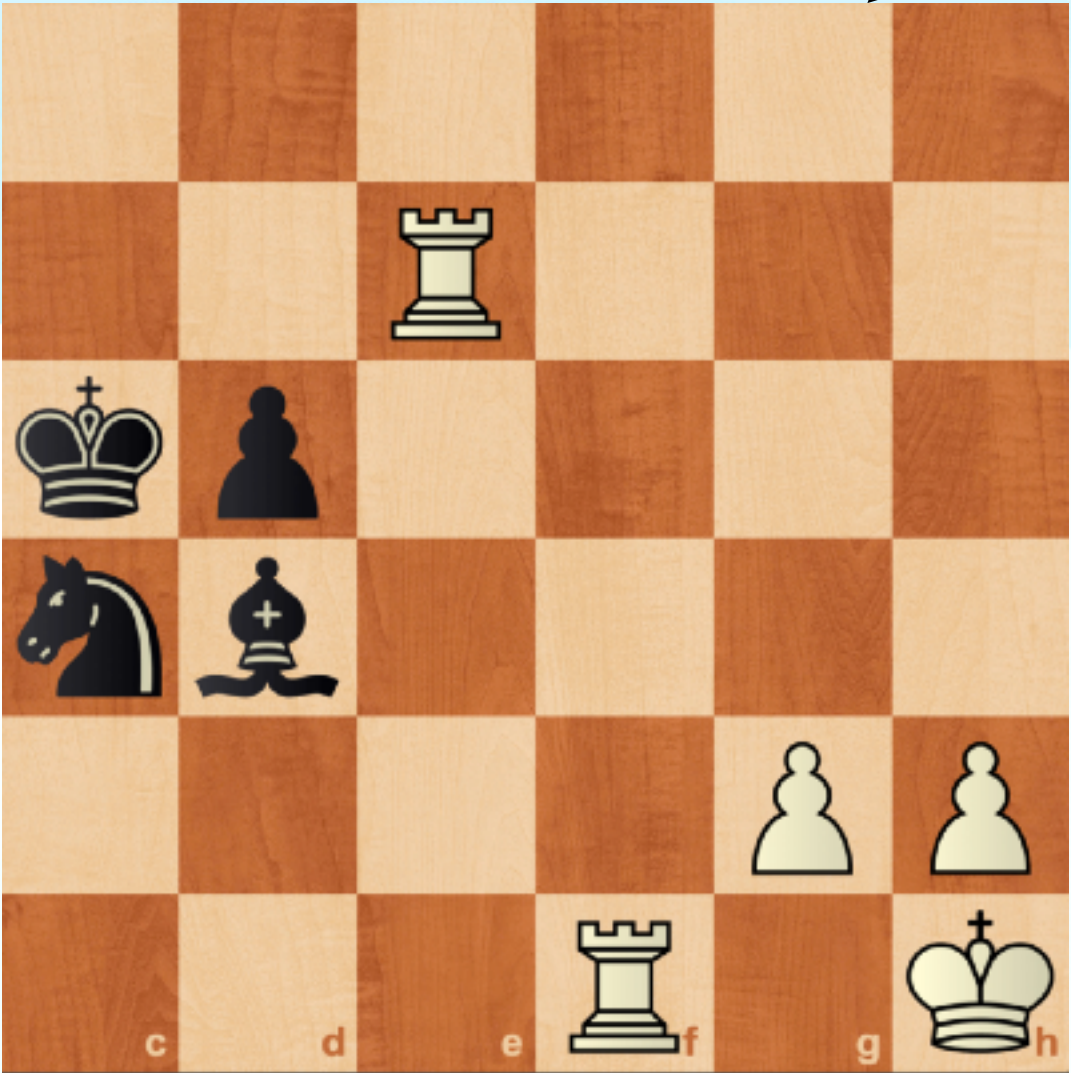
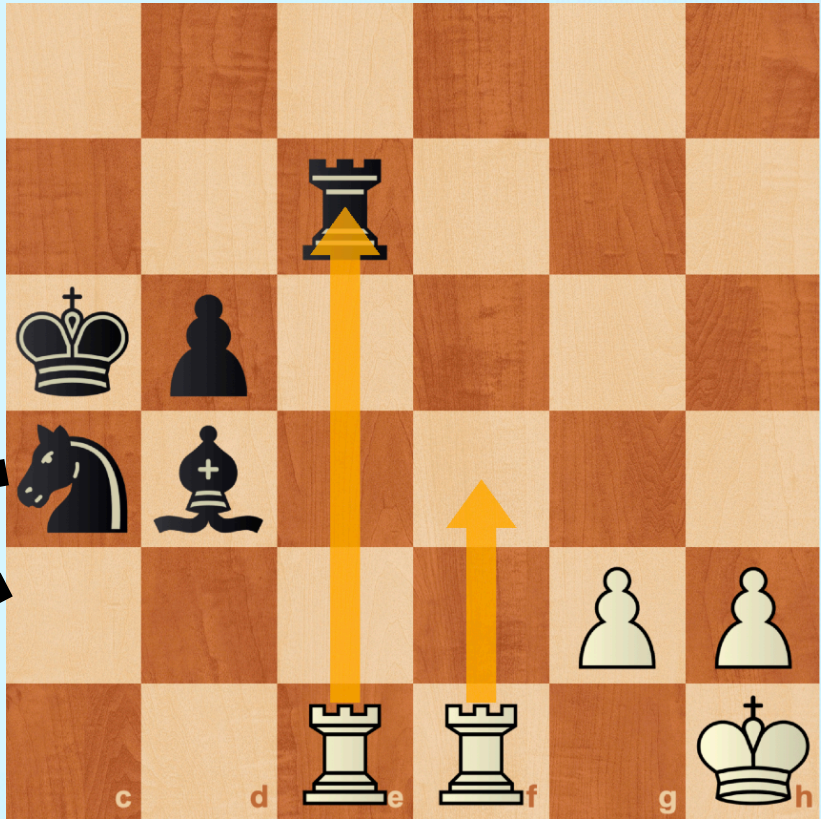
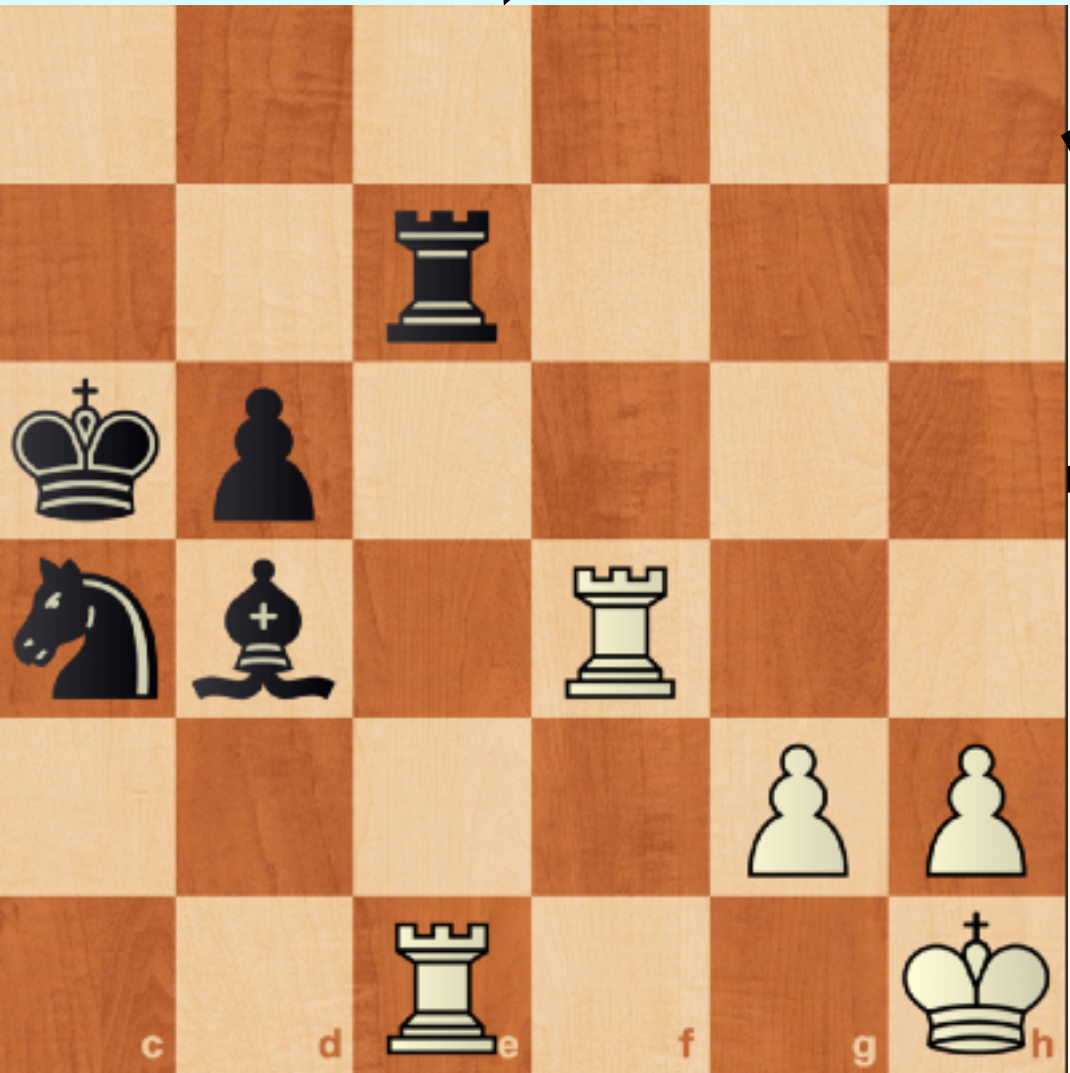


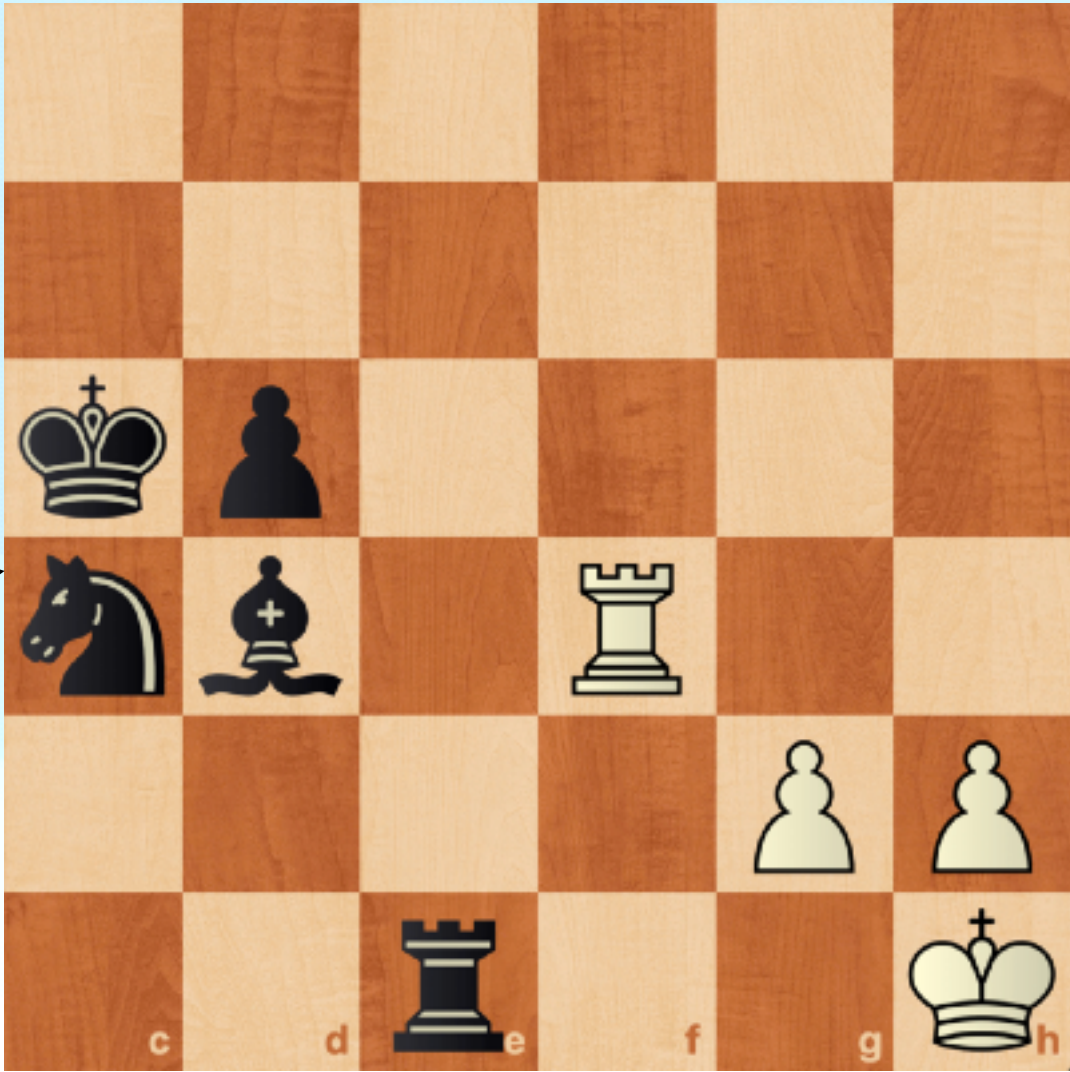
Example: $\alpha - \beta$ pruning



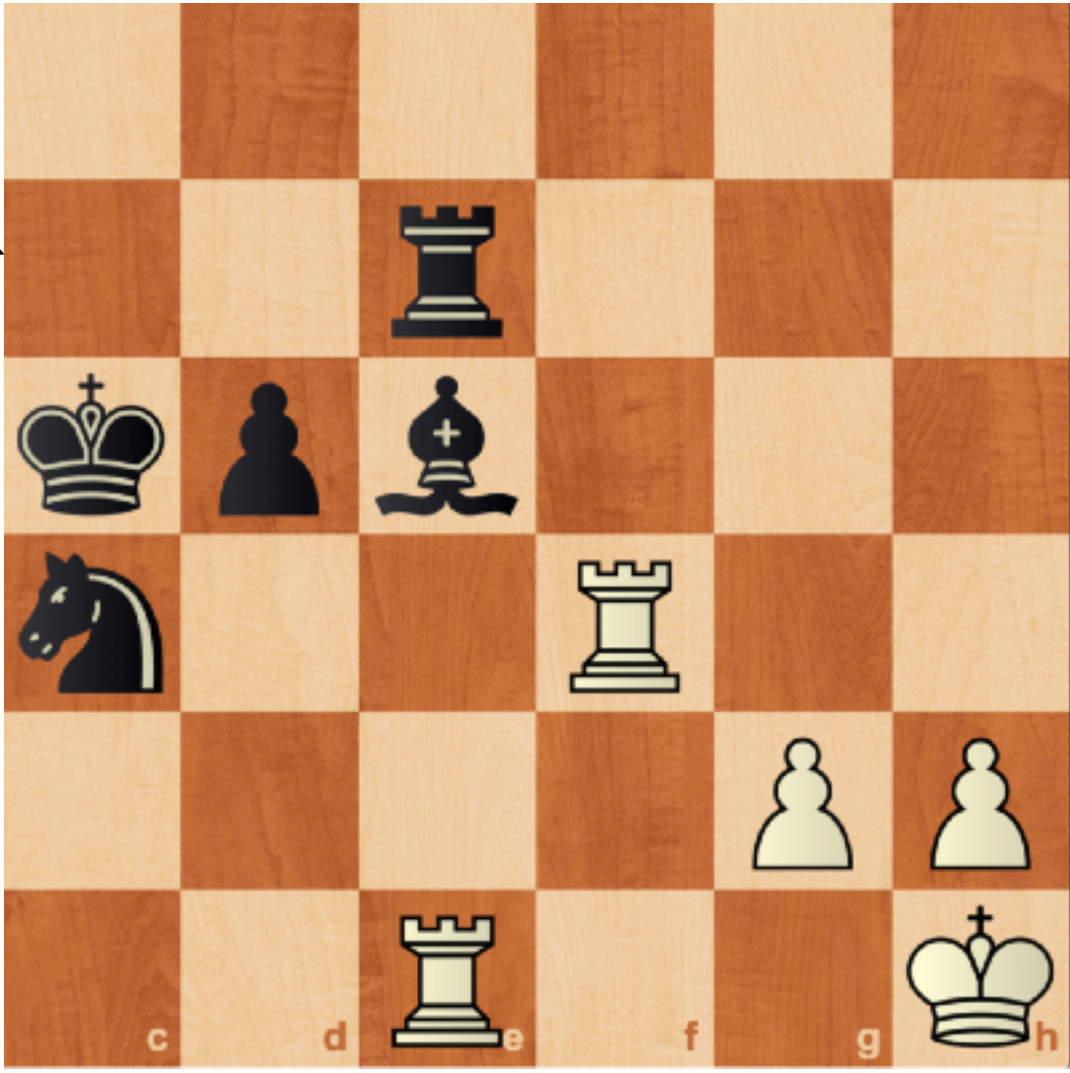
Black advantage, -3.1 (stockfish)



Black to move



Black Mates in 1



White to move

Midterm Review

Everything about the search!

- Uninformed search (knows nothing)
 - BFS, DFS, IDFS ...
- Informed search (knows where's the goal)
 - Greedy, A*, local search algorithms
- CSP (special structured, don't care path)
 - Preprocessing (AC3), Backtracking...
- Games (two (or more) players)
 - $\alpha - \beta$ pruning